

# Explanatory Case Study (ECS) Method: A Brief Summary

Work Package 2:  
Welfare and Social Protection Policies

# About Us

CENTRE FOR RESEARCH  
ON INNER CITY HEALTH

**St. Michael's**

Inspired Care.  
Inspiring Science.

Our SOPHIE team, working on Work Package 2: Welfare and Social Protection Policies, is based at the Centre for Research on Inner City Health in Toronto, Canada.

## **Our Team:**

Fariaha Ali

Emilie Renahy

Aysha Butt

Ketan Shankardass

Alix Freiler

Jongnam Hwang

Christiane Mitchell

Carles Muntaner

Edwin Ng

Patricia O'Campo

# Case Study Definition

CENTRE FOR RESEARCH  
ON INNER CITY HEALTH

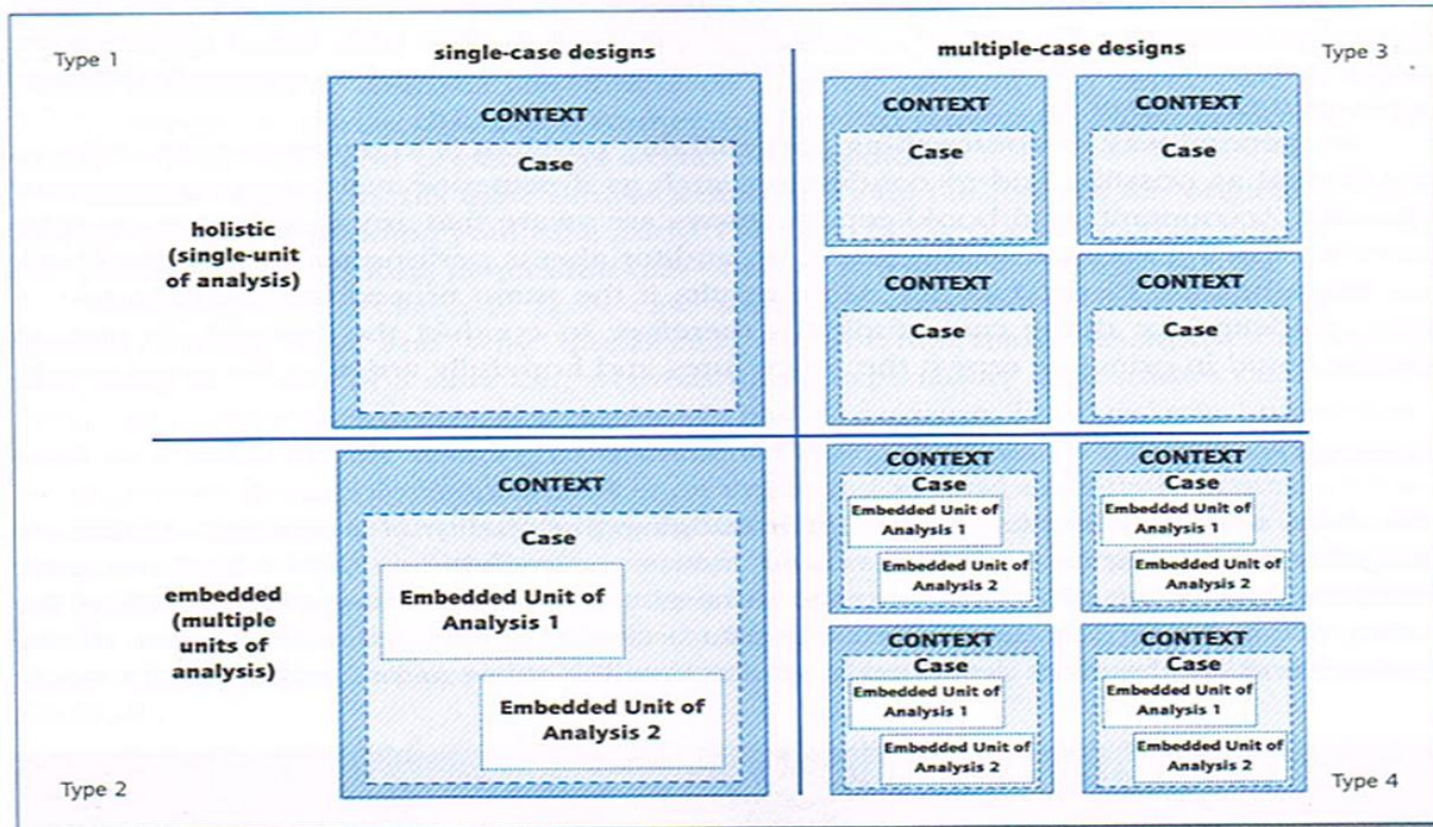
St. Michael's

Inspired Care.  
Inspiring Science.

The essence of a case study is that it tries to illuminate a decision or set of decisions: *why they were taken, how they were implemented, and with what results* (Schramm 1971 as cited in Yin 2014).

# ECS: Single and Multiple Designs

**Figure 2.4** Basic Types of Designs for Case Studies



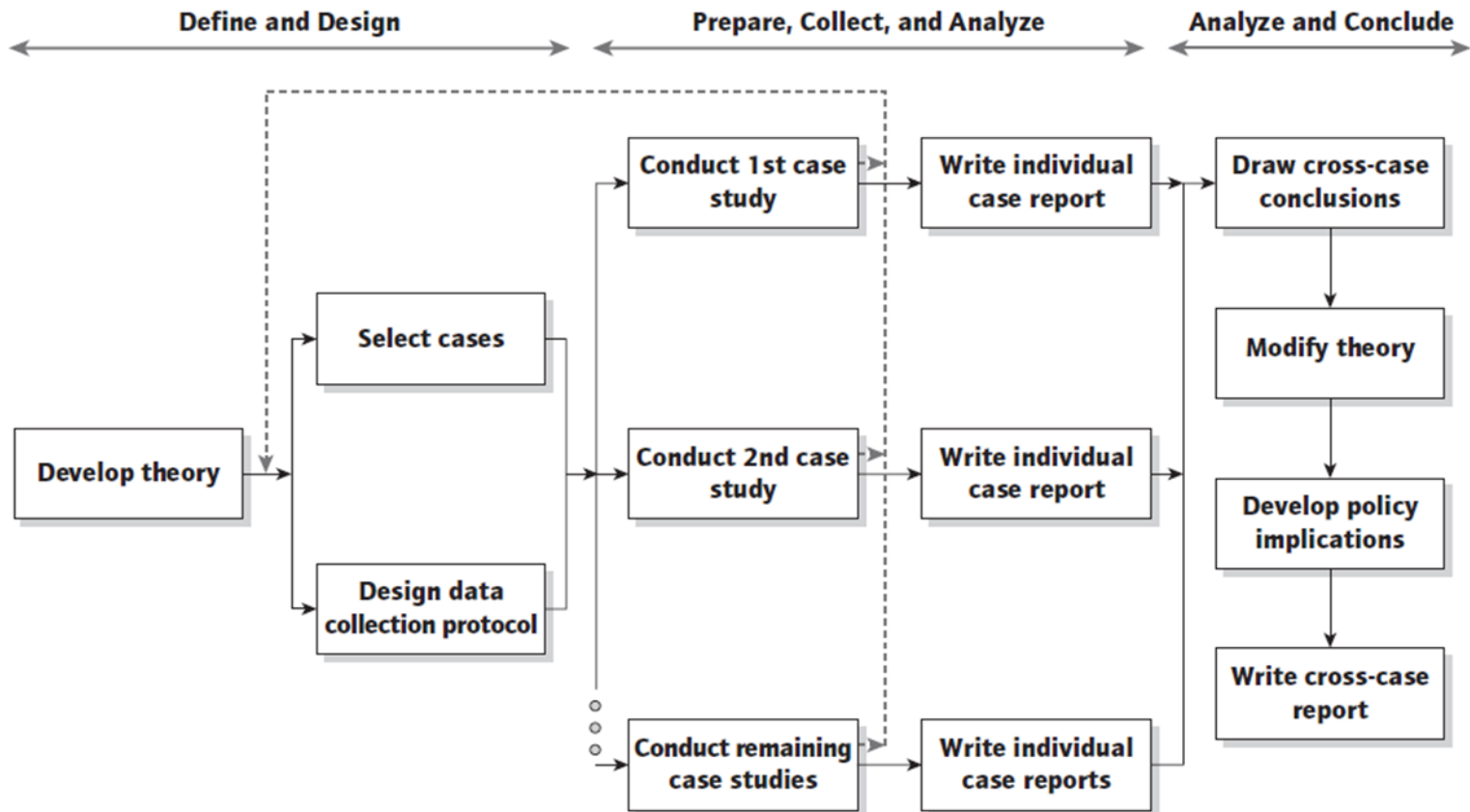
Source: COSMO Corporation cited in Yin, 2014, p.50.

# ECS: Process

CENTRE FOR RESEARCH  
ON INNER CITY HEALTH

**St. Michael's**

Inspired Care.  
Inspiring Science.



Source: COSMO Corporation cited in Yin, 2014, p. 60.

SOPHIE Newsletter: Explanatory Case Study  
Method (June 2015)

# ECS: Case Study Selection

CENTRE FOR RESEARCH  
ON INNER CITY HEALTH

**St. Michael's**

Inspired Care.  
Inspiring Science.

Three conditions must be met to be deemed suitable for an explanatory case study method. The research project must (Yin, 2014):

- seek to explain “how”/“why” a phenomenon occurs,
- seek to examine a contemporary phenomenon, and,
- the researchers must have no control over the phenomenon.

# ECS: Data Collection

CENTRE FOR RESEARCH  
ON INNER CITY HEALTH

St. Michael's

Inspired Care.  
Inspiring Science.

Examples of ECS data sources:

- Documents (e.g., newspapers such as la Repubblica; articles, books)
- Archival records (e.g., government reports)
- Interviewers (e.g., open-ended conversations with key informants)
- Direct observations (e.g., observing parliamentary proceedings)
- Focus groups (e.g., group interviews with key stakeholders)

*\*ECS are stronger when there are multiple sources of data as it enables triangulation of evidence.*

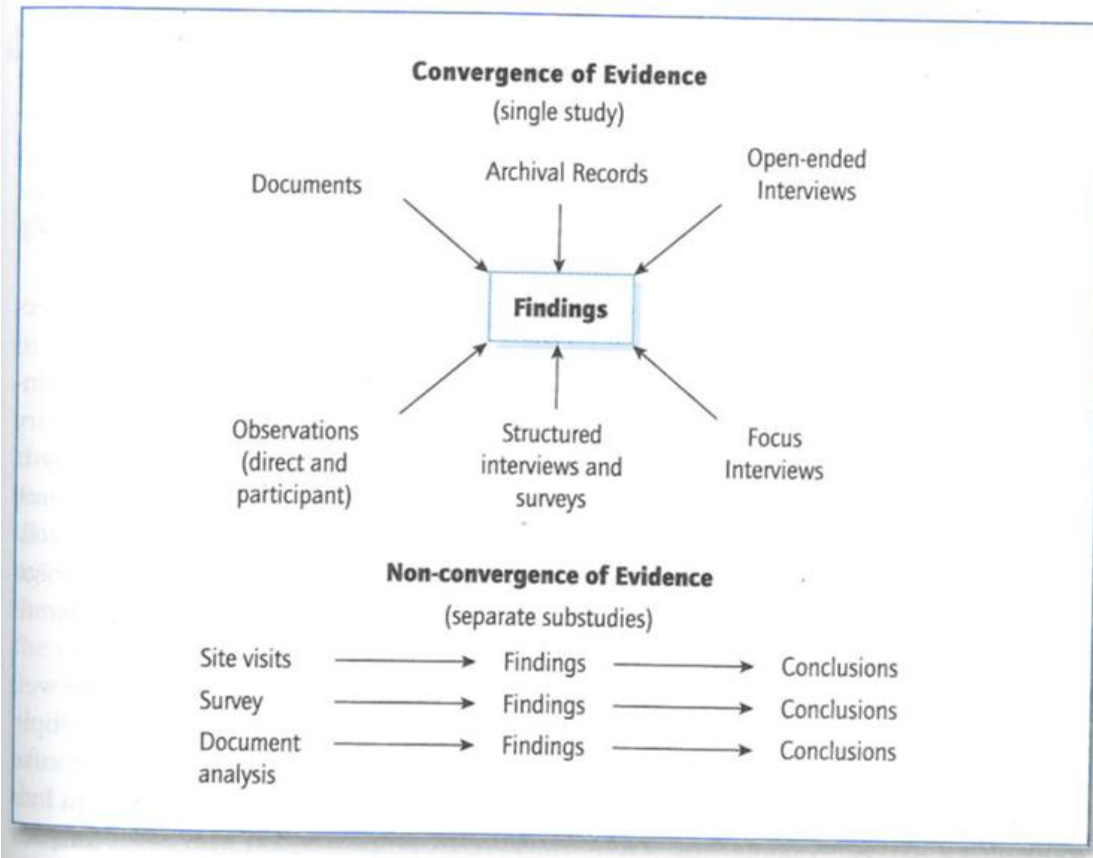
# ECS: Data Collection

CENTRE FOR RESEARCH  
ON INNER CITY HEALTH

**St. Michael's**

Inspired Care.  
Inspiring Science.

**Figure 4.2** Convergence and Non-convergence of Multiple Sources of Evidence



- **Data Triangulation:** Establishes *converging lines of evidence* to increase the robustness of findings.
- Use multiple sources of evidence to establish the same set of events or “facts”.
- Evidence can include qualitative and quantitative types of data.

Source: Yin, 2014, p.121.



# ECS: Data Analysis Approaches

CENTRE FOR RESEARCH  
ON INNER CITY HEALTH

St. Michael's

Inspired Care.  
Inspiring Science.

- Pattern-matching: Assessing collected evidence against expected outcomes
- Explanation building: Explaining a case and identifying a set of causal links
- Cross-case synthesis: Using multiple case studies to augment study aims

*\*Increasing the robustness of findings involves developing and testing rival explanations or alternative perspectives.*

# ECS: SOPHIE Examples

CENTRE FOR RESEARCH  
ON INNER CITY HEALTH

St. Michael's

Inspired Care.  
Inspiring Science.

## **Explanatory *Single-Case* Study:**

Using an explanatory case study method, we explain *how* opposition efforts (i.e. strategies and activities) have influenced the maintenance of fuel poverty policies and programmes in England during a time of fiscal austerity (O'Campo et al., Manuscript in preparation).

## **Explanatory *Multiple-Case* Study:**

Following the single-case study, we hope to undertake a subsequent *multiple*-case study that compares our findings with other SOPHIE explanatory case studies. The purpose of a multiple-case analysis is to find similarities across cases, and to further explain the broader mechanisms around opposition efforts and policy change in a time of widespread austerity.

# ECS: HiAP Example

CENTRE FOR RESEARCH  
ON INNER CITY HEALTH

**St. Michael's**

Inspired Care.  
Inspiring Science.

## **Explanatory *Multiple*-Case Study:**

In addition to the SOPHIE projects, we have undertaken another explanatory *multiple*-case study that uncovers *how* well-established Health in All Policies (HiAP) initiatives managed to sustain implementation across sectors and across geographic levels of government (Shankardass et al., 2014).

# Useful References

CENTRE FOR RESEARCH  
ON INNER CITY HEALTH

St. Michael's

Inspired Care.  
Inspiring Science.

- O'Campo, P., Muntaner, C., Frieler, A., Ali, F., Butt, A. & Mitchell, C. Opposition Efforts to Fuel Poverty Cuts: An Explanatory Single-Case Study (*Manuscript in preparation*).
- Shankardass, K., Renahy, E., Muntaner, C., & O'Campo, P. (2014). Strengthening the implementation of Health in All Policies: a methodology for realist explanatory case studies. *Health Policy and Planning*, czu021.
- Stake, R. E. (1995). *The Art of Case Study Research*. Sage
- Yin, R. K. (2014). *Case Study: Design and Methods* (5<sup>th</sup> ed.). Thousand Oaks, CA: Sage.
- Yin, R. K. (2012). *Applications of Case Study Research* (3<sup>nd</sup> ed.). Thousand Oaks, CA: Sage.

CENTRE FOR RESEARCH  
ON INNER CITY HEALTH

**St. Michael's**

Inspired Care.  
Inspiring Science.

*sophie* 

SOPHIE Newsletter: Explanatory Case Study  
Method (June 2015)